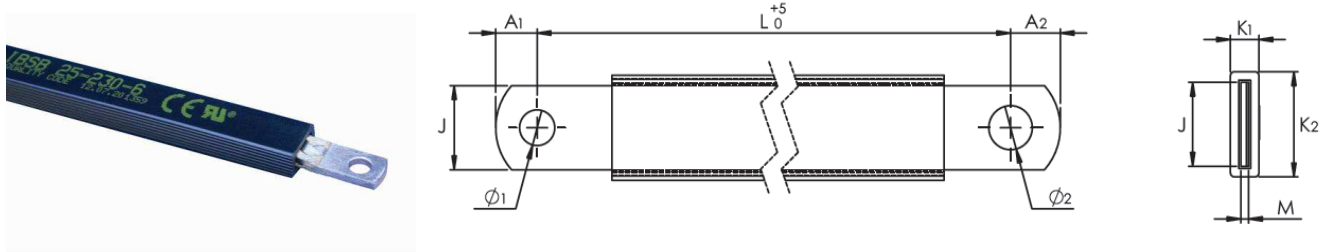




IBSB 25
INSULATED BRAIDED SHUNT

- ❑ **IBSB 25: Insulated Braided shunt 25 mm²**
 - These insulated shunts are the best alternative to cables. No cutting, no stripping, no crimping.
 - These shunts are very flexible, pre-punched, ready to use, quick and easy to install.



Part No	IBSB 25	S (mm ²)	L (mm)	Ø1 (mm)	Ø2 (mm)	A1 (mm)	A2 (mm)	J (mm)	M (mm)	K1 (mm)	K2 (mm)		 kg
558500	IBSB 25-230-6	25	230	6.5	6.5	7.5	7.5	12	2.8	9	18	10	0.08
558501	IBSB 25-330-6	25	330	6.5	6.5	7.5	7.5	12	2.8	9	18	10	0.11
558502	IBSB 25-430-6	25	430	6.5	6.5	7.5	7.5	12	2.8	9	18	10	0.15
558503	IBSB 25-530-6	25	530	6.5	6.5	7.5	7.5	12	2.8	9	18	10	0.18
558504	IBSB 25-630-6	25	630	6.5	6.5	7.5	7.5	12	2.8	9	18	10	0.22
558505	IBSB 25-830-6	25	830	6.5	6.5	7.5	7.5	12	2.8	9	18	10	0.28
558506	IBSB 25-1030-6	25	1030	6.5	6.5	7.5	7.5	12	2.8	9	18	10	0.35

Technical data

- Excellent electrical contact with integral palm construction
- Good tensile strength

- ❑ **Insulation**
 - High resistance: vinyl compound
 - Max working temperature: 105°C
 - Self-extinguishable: UL 94 V0
 - Dielectric strength: 20 kV/mm
 - Max working voltage: 1000 V AC - 1500 V DC-IEC & UL 758
 - Max working voltage: 600V AC/DC – UL 758

- ❑ **Braid**
 - Cu-Etp Tinned electrolytic copper
 - Copper purity of minimum 99,9%
 - Wire diameter: 0.15 mm for maximum flexibility – According to EN 13602
 - Very good resistance to vibration

- ❑ **Dielectric test**
 - 3500 V AC, 1 minute according to the EN 60439-1 standard (rated insulation voltage Ui 1000 V AC)

□ **Intensity / temperature rise**

WORKING TEMPERATURE = AMBIENT TEMPERATURE + ΔT
--

- For 1 IBSB per phase:


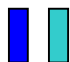
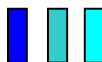
Insulated Braided Conductor type	Section mm ²	ΔT (K)						
		30	40	45	50	55	60	70
IBSB 25	25	116A	134A	142A	150A	157A	164A	177A

NOTE: The tables show the temperature rise (ΔT), depending on the current value (I).

- Using 2 or 3 “IBSB” in parallel

NOTE:

Using 2 or 3 IBSB in parallel multiply the nominal current (I) of 1 IBSB by the factor in the table.

Factor		
		
1	1.6	2

Ex:

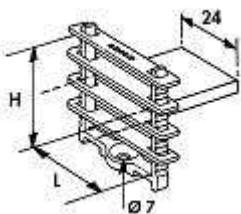
For IBSB 25: admissible current for 2 IBSB (ΔT = 50 K) = 150 X 1.6 = 240 A

For IBSB 25: admissible current for 3 IBSB (ΔT = 50 K) = 150 X 2 = 300 A

ADDITIONAL INFORMATION

□ **Space between 2 or 3 IBSB in parallel**

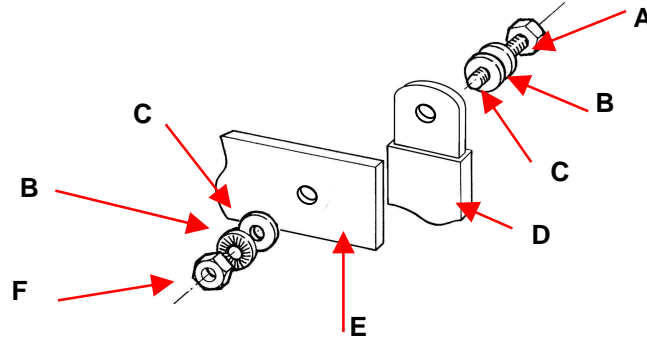
A minimum air gap is required: use FS 24 spacer clamp



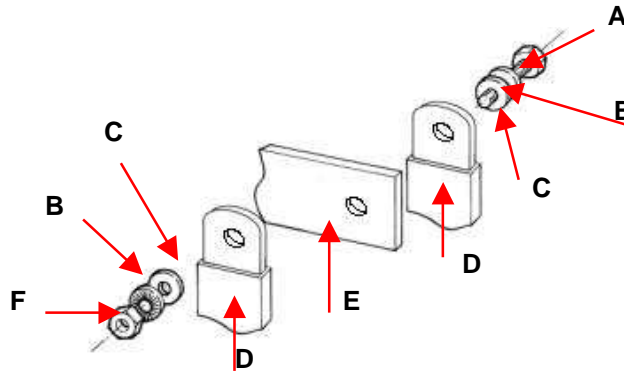
Spacer clamp				
Designation	Part No	H (mm)	L (mm)	W (kg)
FS24	553550	53	30	0.015

□ **Important: assembly instructions**

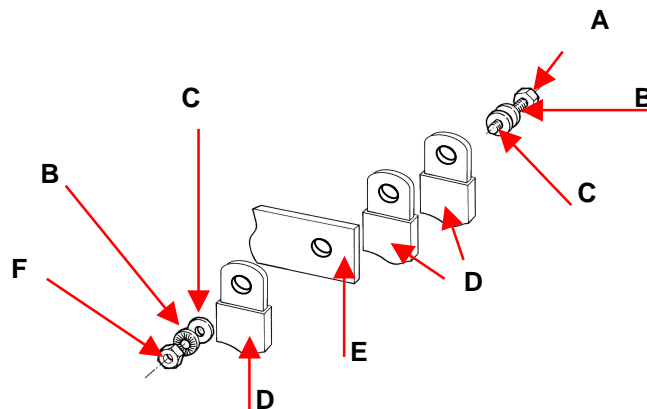
- For 1 IBSB:



- For 2 IBSB:



- For 3 IBSB:



- A: Screw bolt
- B: "contact" washer
- C: Flat washer
- D: Braid
- E: Copper bar
- F: Nut

		References	External Flat and “Contact” Washers diameters (mm)	Clamping Torque (N.m)
IBSB 25	Ø1 – 6.5	HM 6	12	13
	Ø2 – 6.5	HM 6	12	13

With a class 8.8 zinc coated bolt, using “contact” washers tightened with torque wrench, without lubrication.

□ **Certificates:**

- CE conformity
- ROHS Compliance
- IEC 60439.1 & IEC 61439.1
- CRUus per UL 67 & CAN/CSA C22.2 No.29
- RU per UL 758